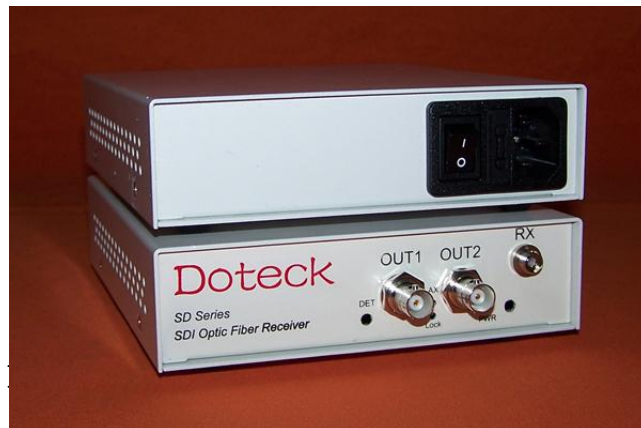
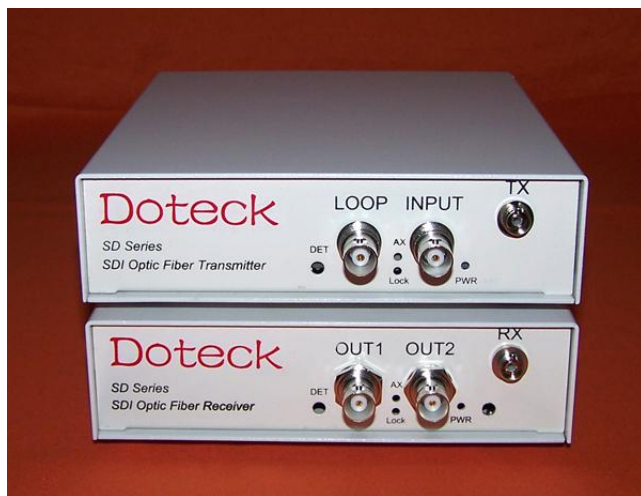


Doteck

Doteck SD Series

SDI/ASI Digital Video fiber optic Transmission System



Features

- (1) SDI/ASI signal auto recognition, not need to select by hand
- (2) Compliant with the standards of SMPTE259M, SMPTE297M, SMPTE310M, SMPTE305M (SDTI), SMPTE344M
- (3) Compliant with the standard of DVB-ASI(EN50083-9)
- (4) Auto adaption to the speed of SDI 143M,177M,270M,360M,540Mbps, or DVB-ASI
- (5) With automatic cable equalization function, compensation for cable transmission loss
- (6) Convenient instructions of LED status, data rate, optical signal, power etc.
- (7) PCB boards made with environmentally friendly Pb-free
- (8) PCB boards made with multilayer design, to ensure stable and reliable signal transmission
- (9) All components, including connectors, are ordered from public-known manufacturers in the world, high stability and reliability ensurance
- (10) Enclosure box material is made of aluminum, elegant appearance, light weight
- (11) Dual switching power supply design, wide voltage range, reliable long-term running
- (12) A variety of installation options: 15-slot rack , 16-slot rack, particularly suitable for large volume optical transmission platform construction, and also available for 4-slot rack, 2-slot rack and single-slot rack, fixed 1RU 19-inch enclosure box.

Introduction

Dotek SD series digital video fiber optic transmission system can transmit one SD-SDI(143M/177M/270M/360M/540Mbps) standard definition digital video through one single mode fiber or multimode fiber with the standards of SMPTE259M, SMPTE297M, SMPTE310M, SMPTE305M (SDTI), or transmit one digital video signal with the

standard of DVB-ASI stream.

Due to the advanced digital fiber optic transmission technology, you need not make any adjustments, simple to set up, easy to operate.

Dotek SD series transmitter provides one SDI/ASI input, and one loop-through for local monitoring. The receiver outputs 2-way parallel SDI/ASI digital video.

Dotek SD series transmitter equipped with auto-cable equalization circuit, and cable driver circuit available at receiver.

Dotek SD series, both at the transmitter and receiver, signal jitter elimination circuit available, to ensure high quality signal transmission over long distance fiber cable.

Technical Specification

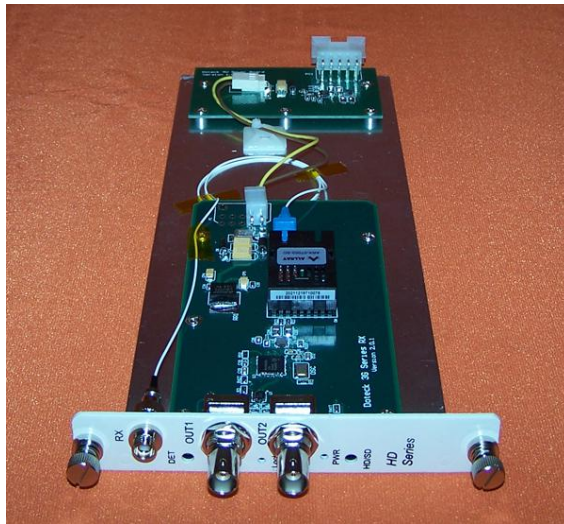
SDI/ASI Input	
Signal Standard	SMPTE259M,SMPTE297M,SMPTE310, SMPTE305(SDTI), DVB-ASI(EN50083-9)
Number of Input	1 plus 1 loop-through
Resolution	10 Bit
Signal Level	>380mVp-p
Auto-Cable Equalization	>250m(270Mbps)(BELDEN8281 Cable)
Return Loss	>16dB(270Mbps)
Impedance	75Ω
Connector	BNC
SDI/ASI Output	
Number of Output	2
Signal Level	800mVp-p±10%
Rise/Fall time	<0.65ns
SDI Jitter	<0.2UI(740ps)@10Hz <0.2UI(740ps)@1kHz
Impedance	75Ω
Connector	BNC
Physical	
Dimension(HxWxD,	

mm)	
19-inch 1RU Box (2)	44×433×340
Mini Box	22.5x72x119
Small Box	44x146x169
Modular card	132×23×291
One slot Rack	44x228x340
2-slot Rack	44x430x340
4-slot Rack	53x430x340
8-slot Rack	101x430x340
18-slot rack	133x483x344
Power Supply	130 - 260VAC, 50-60Hz
Power Consumption	<10W
Temperature	0 to +70 Degree
Humidity	0 to 95% RH Non-condensing
LED Status Indicator	Power, Optical Link, Video Activity
Optical	
Fiber Type	Single mode
Number of fiber	1
Wavelength	1310nm/1550nm
Distance	0-40km, or 0-80km, or 0-120km optional
Connector	FC/PC, or SC/PC

More setup options:



18-slot, 19-inch 3RU, dual power supply



Fiber optic module



8-slot, 19-inch, dual power supply



4-slot, 19-inch, dual power supply



2-slot, 19-inch, dual power supply



One slot, Built-in power supply



Mini Box, external power supply



Fixed 19-inch 1RU standard cabinet with dual power supply

Doteck

Doteck Digital Technologies

Room 19D, 11A, 11B, 11D, Building 2, International Incubation Zone, No. 2, Shangdi Info Road, Haidian District, BEIJING, CHINA, Postcode: 100085

Tel: +86-10-62120151

FAX: +86-10-82893162

Mobile: +86-13910290608

Contact: LI XINJIAN

E-mail: Doteck@126.com

Welcome to visit our website for more info: www.Doteck.com